



KENTUCKY  DERBY

STYLE GUIDE 2024

GUEST STYLE EDITOR | ZANNA ROBERTS RASSI



Welcome to a sartorial spectacle 150 years in the making! This year once again, Churchill Downs will open the gates to not only the greatest thrill in horse racing, but an unparalleled tradition of unmatched fashion. Introducing the 2024 Style Guide for the Kentucky Derby—a fashion editorial that breeds classic race day occasion wear with contemporary design.

This guide honors the milestone 150th running by presenting a composite of heirloom elegance alongside today's biggest trends. Inside you will find inspirational looks, accessories and of course, headpieces!

May these pages provide more than just an atlas of attire, but also serve as a passage through the cultural zeitgeist and quintessential taste associated with the first Saturday in May, when the Twin Spires symbolize a temple of Thoroughbred racing and a showcase for the world's most prestigious outdoor runway. The tapestry of horse racing enthusiasts and style aficionados reveals a kaleidoscope of inventive fashion expression, from ageless to avant-garde, each driven by the enduring art of master millinery and the canvas of creativity it emboldens.

I invite you with me on this aesthetic adventure and encourage you to join the enchanting dimension of vogue that parades parallel to the Run for the Roses. It's time to plan your most inspired attire and raise the fashion stakes. From feminine florals to modern menswear, sleek suits and sculptural silhouettes, find a race day fashion trademark that is fun and flamboyant or a trackside style that is simply timeless. Dress to win, place and show off at the 150th running of the Kentucky Derby.

I can't wait to see your Derby style!

Zanna Roberts Rassi
Guest Style Editor



FASCINATOR
Karen Morris Millinery

EARRINGS
Kate Spade

DRESS
V Chapman

GLOVES
Cornelia James

CROSSBODY
Radley London





LEFT TO RIGHT

FASCINATOR
Hat Haven Millinery

EARRINGS
Kate Spade

DRESS
Sachin & Babi

SHOES
Kate Spade

SUITING
Eleventy

POCKET SQUARE
Eleventy

TIMEPIECE
Longines

SOCKS
vineyard vines





LEFT

FASCINATOR
derbyologie

DRESS
Philosophy di Lorenzo Serafini

SHOES
Black Suede Studio

RIGHT

FASCINATOR
Formé Millinery

SUITING
Emanuel Ungaro





LEFT TO RIGHT

SUNGLASSES
Krewe

■ **SUITING**
vineyard vines

SHIRTS & TIE
Eton

■ **TIMEPIECE**
Longines

POCKET SQUARE
Robert Jensen

■ **HATINATOR**
Christine A. Moore Millinery

■ **DRESSES**
vineyard vines

■ **SHOULDER BAG**
Radley London

■ **FASCINATOR**
Formé Millinery

EARRINGS
Deepa Gurnani

■ **BOATER**
vineyard vines

BOW TIE
R. Hanauer

SPORT COAT
Ravazzolo

POCKET SQUARE
Eton



LEFT TO RIGHT

HAT
Christine A. Moore Millinery

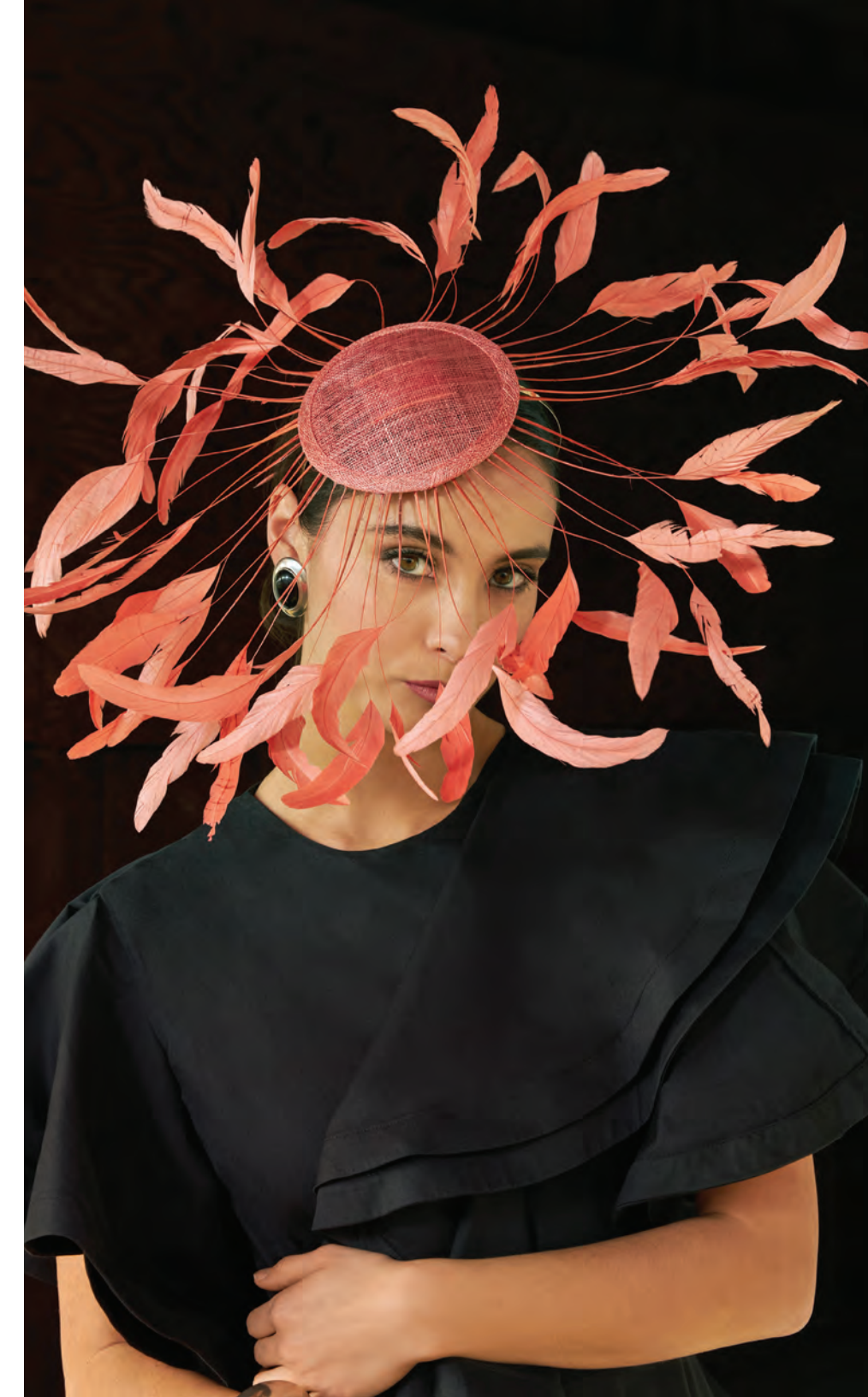
JEWELRY
Ben-Amun

DRESSES
palmer//harding

SHOES
Frances Valentine

FASCINATOR
The Hat Girls

SHOES
Rosamund Muir London





LEFT TO RIGHT

■ **FASCINATOR**
Formé Millinery

JEWELRY
Kate Spade

WOMEN'S APPAREL
Kate Spade

SHOES
Rosamund Muir London

BOATER
Hat Haven Millinery

SUITING
Canali

SHIRT & POCKET SQUARE
Eton

TIE
Robert Jensen

SUNGLASSES
Krewe

■ **TIMEPIECES**
Longines

SUITING
Atelier Munro

SHIRT
Eton

■ **BOW TIE**
Brackish

POCKET SQUARE
R. Hanauer

HAT
Jane Taylor London

EARRINGS
Ben-Amun

SHOES
Kate Spade





SPORT COAT
Ravazzolo

SHIRT
Eton

TIE
Robert Jensen

■ **POCKET SQUARE**
vineyard vines

■ **FASCINATOR**
The Hat Girls

SCARF
Sarah Flint

■ **BELT**
vineyard vines

■ **HANDBAG**
Radley London

■ **DRESS**
vineyard vines





LEFT TO RIGHT

■ **FEDORA**
Christine A. Moore Millinery

■ **POLO**
vineyard vines

TROUSERS
Eleventy

STRAW HATS
Peter Beaton

JEWELRY
Ben-Amun

WOMENSWEAR
MAE NEW YORK

HANDBAGS
Judith Leiber

SHOES
Sarah Flint

GLOVES
Cornelia James



■ **TIMEPIECE** Longines

■ **FASCINATOR** Formé Millinery





LEFT TO RIGHT

FASCINATOR
Hat Haven Millinery

EARRINGS
Deepa Gurnani

DRESS
Alémais

SUNGLASSES
Krewe

SPORT COAT
Eleventy

SHIRT
Eton

TIE & POCKET SQUARE
Robert Jensen

TROUSERS
Atelier Munro

■ **FEDORA**
Formé Millinery

■ **SCARF**
vineyard vines

SUITING
Tiffany Brown



HAT: Cigi Burriss Millinery • DRESS: Nicole Miller • JEWELRY: Kate Spade • SHOES: Sarah Flint





LEFT TO RIGHT

FEDORA
Formé Millinery

SUITING
Eleventy

BROACH
Deepa Gurnani

TIMEPIECES
Longines

BOW BAND
Jane Taylor London

NECKLACE
Frances Valentine

DRESS
Dorothee Schumacher

HAT
Filipa Cardoso Millinery

EARRINGS
Deepa Gurnani

DRESS
Andrea Iyamah

SUITING & POLO
vineyard vines

MOON BAND
Hat Haven Millinery

EARRINGS
Deepa Gurnani

DRESS
Elliatt





BOW BAND
Jane Taylor London

SUITING & BLOUSE
Veronica Beard

JEWELRY
Ben-Amun

HANDBAG
Judith Leiber



■ *WRITING INSTRUMENT* Roots & Jones



LEFT TO RIGHT

■ **FASCINATORS**
The Hat Girls

SCARF
Sarah Flint

JACKET & SKIRT
Eleventy

SHOES
Rosamund Muir London

BALL CAP
Eleventy

■ **BOW TIE**
Brackish

SUITING
Antonio Marras

JACKET
Cinq à Sept

JACKET, SUIT & TROUSERS
palmer//harding





LEFT

HAT
Griffin Hatters

SUITING
Emanuel Ungaro

TIMEPIECE
Longines

CLUTCH
Cult Gaia

RIGHT

TUXEDO
Byron

SHIRT
Eton

BOW TIE
Brackish

POCKET SQUARE
R. Hanauer



FASCINATOR Heather Huey Millinery • **EARRINGS** Ben-Amun • **DRESS** Edeline Lee • **GLOVES** Cornelia Jane • **SHOES** Sarah Flint



LEFT TO RIGHT

FASCINATOR
Jane Taylor London

NECKLACE
Ben-Amun

APPAREL
Bach Mai

SHOES
Black Suede Studio

FASCINATOR
Jane Taylor London

SHOES
Andrea Iyama

BOATER
Hat Haven Millinery

SCARF
Alemeis

SHOES
Rosamund Muir London

CREDITS



■ **HEADBAND**
Brianna Cannon

EARRINGS
Ben-Amun

DRESS
Reem Acra

GUEST STYLE EDITOR
Zanna Roberts Rassi

PHOTOGRAPHER
Andrew Kung Group

LEAD STYLIST
Devki Bhatt

MENSWEAR STYLIST
Chris Burns – Rodes for Him

HAIR STYLISTS
Karie Higgins
Kelsey Nelson

MAKEUP STYLISTS
Cassie Young
Misty Loggie

■ **OFFICIAL TIMEPIECE**
Longines

■ **OFFICIAL STYLE**
vineyard vines

■ **OFFICIAL WRITING INSTRUMENT**
Roots & Jones

■ **FEATURED MILLINERS**
Christine A. Moore Millinery
Formé Millinery
The Hat Girls

■ **LICENSEES**
Brackish
Brianna Cannon
Radley London

BRANDS AVAILABLE AT GLASSCOCK BOUTIQUE / GLASSCOCK TOO
Elliat • Frances Valentine • Greta Constantine • Nuebyrne • Sachin & Babi

BRANDS AVAILABLE AT RODES FOR HIM | FOR HER
Alémás • Atelier Munro • Byron • Canali • Christine A. Moore • Cult Gaia • Eton
Judith Leiber • Krewe • Ravazzolo • R. Hanauer • Robert Jensen • The Hat Girls

FOR PRESS INQUIRIES, CONTACT:
derby@mww.com



KENTUCKY DERBY®



Churchill Downs Racetrack
700 Central Avenue, Louisville, KY 40208

KENTUCKYDERBY.COM | [@KENTUCKYDERBY](https://twitter.com/KENTUCKYDERBY) | [#KYDERBY](https://www.facebook.com/KYDERBY)